

# Anti- GAPDH Mouse Monoclonal Antibody

www.dia-an.com

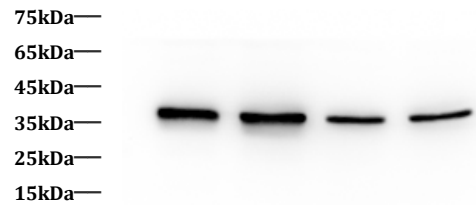
Cat#: 2058

027-59325199

service@dia-an.com

Only For Research. Not For Diagnosis.

<b>Synonyms:</b>	GAPDH
<b>Attribute:</b>	Mouse Monoclonal Antibody
<b>Isotype:</b>	IgG1
<b>Purity:</b>	Protein A Purified
<b>Application:</b>	ELISA, WB, IP
<b>Calculated MW:</b>	36kDa
<b>Observed MW:</b>	36kDa
<b>Reactivity:</b>	Mouse, Rat, Rabbit, Chicken, Hamster, Cat, Dog, Human, Pig, Xenopus laevis, Fish, Monkey, Zebrafish.
<b>Immunogen:</b>	Recombinant Human GAPDH protein expressed by E.Coli
<b>Buffer:</b>	PBS with 0.1% sodium azide and 50% glycerol, pH 7.2
<b>Storage:</b>	Store at -20°C. Do not aliquot
<b>Recommended Dilution:</b>	WB: 1:2000-5000 IP: 1:5000-10000 3ug/Sample



Western Blotting of Zebra Fish lysates with anti-GAPDH monoclonal antibody (2D7) at dilution of 1:5000

## Background:

GAPDH is an enzyme of 37kDa that catalyzes the sixth step of glycolysis and thus serves to break down glucose for energy and carbon molecules. Because the GAPDH gene is often stably and constitutively expressed at high levels in most tissues and cells, it is commonly used as a loading control for western blot and as a control for qPCR.

We focus on precise protein quantification

