

Cat#: 3062

www.dia-an.cn

Anti- Beta Tubulin Rabbit pAb

027-59325199

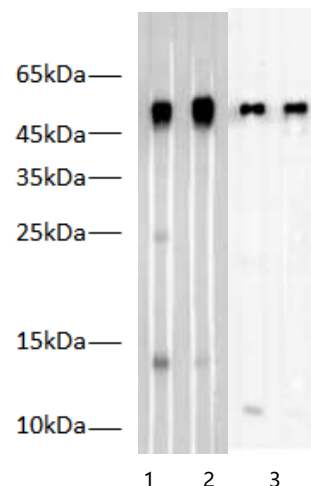
sevice@dia-an.com

Only For Research. Not For Diagnosis.

Synonyms:	beta Tubulin,TUBB, β -tubulin
Attribute:	Rabbit Polyclonal Antibody
Isotype:	IgG
Purity:	Antigen Affinity Purification
Application:	ELISA, WB, IP,IHC, IF
Calculated MW:	55kDa
Observed MW:	55kDa
Reactivity:	Human,Mouse,Rat,Zebra fish
Immunogen:	Ppeptide derived from human TUBB protein
Buffer:	PBS with 0.1% sodium azide and 50% glycerol, pH 7.2
Storage:	Store at -20°C. Do not aliquot
Recommended Dilution:	WB: 1:500-1000 IP: 3ug/sample IF: 1:500-2000

Background:

Tubulin is a highly conserved $\alpha\beta$ dimeric protein present and is essential for all eukaryotes. $\alpha\beta$ -Tubulin dimers assemble into microtubules, dynamic polymers important in a variety of functions, most noticeably, mitosis. Tubulin assembly and disassembly are linked to guanosine triphosphate hydrolysis.



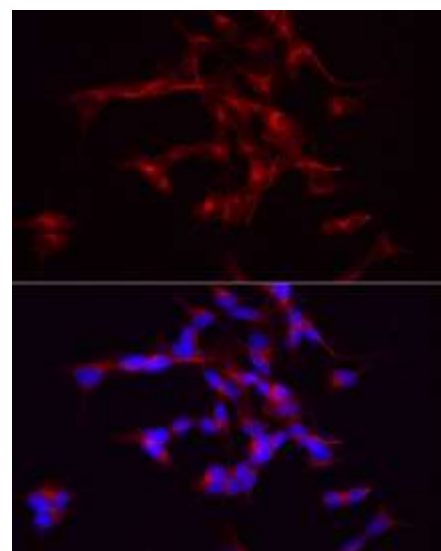
Western Blotting with anti-Beta Tubulin Rabbit Polyclonal antibody at dilution of 1:1000

Lane 1: Hela cell Lysates

Lane 2: Mouse kidney lysates

Lane 3: Human placenta lysates

Lane 4: Human placenta lysates



Immunofluorescent analysis of SHSY-5Y cells with 3062 at dilution of 1:2000

We focus on precise protein quantification