

FLAG-Tag Rabbit pAb

www.dia-an.cn

Cat#: 3064

027-59325199

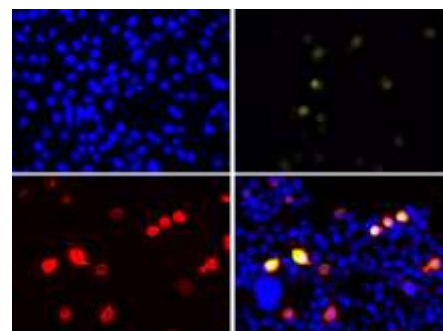
sevice@dia-an.com

Only For Research. Not For Diagnosis.

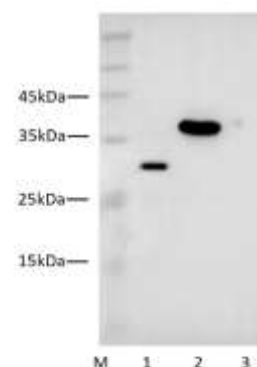
Synonyms:	DYKDDDDK
Attribute:	Rabbit Polyclonal Antibody
Isotype:	
Purity:	Antigen Affinity Purification
Application:	ELISA, WB, IP, IF
Calculated MW:	34kDa
Observed MW:	34kDa
Reactivity:	Human,Mouse,Rat,Zebra fish
Immunogen:	Peptide DYKDDDDK
Buffer:	PBS with 0.1% sodium azide and 50% glycerol, pH 7.2
Storage:	Store at -20°C. Do not aliquot
Recommended Dilution:	WB: 1:2000-50000 IP: 3ug/sample IF: 1:100-200

Background:

FLAG-tag is a polypeptide protein tag that can be added to a protein using recombinant DNA technology, having the sequence motif DYKDDDDK. It has been used for studying proteins in living cells and for protein purification by affinity chromatography. This antibody detects FLAG tag in most applications..



Immunofluorescent analysis of 293F cells transfected with the FLAG-GFP, using 3064 at 1:12000 dilution



Western blot of Flag-tagged fusion protein with anti-Flag antibody (Cat#: 3064) at dilution of 1:10000

Lane1: 293 cell transfected with Flag-GFP
Lane 2: 293 cell transfected with 35kDa Flag tagged Protein
Lane 3: mock-transfected HEK 293 cells