

# Anti- Beta Actin Mouse mAb

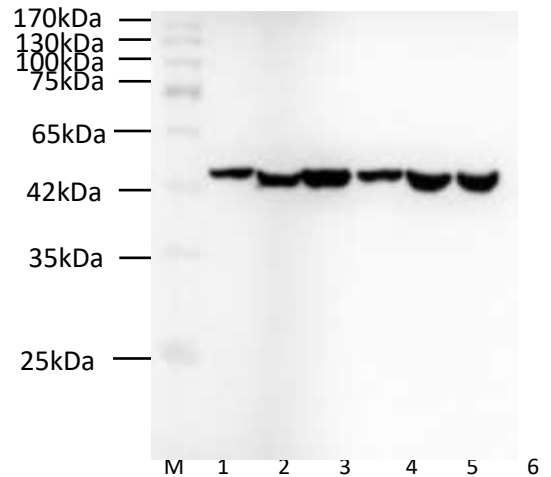
www.dia-an.cn

Cat#: 2060

027-59325199

sevice@dia-an.com

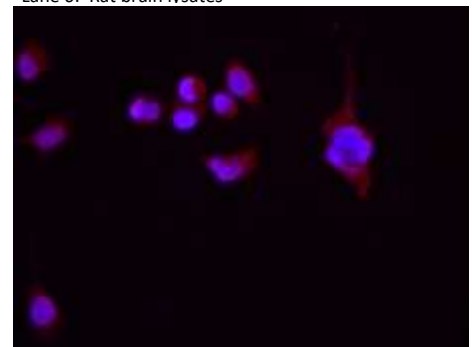
<b>Synonyms:</b>	ACTB, Actin, actin, beta, Beta actin
<b>Attribute:</b>	Mouse Monoclonal Antibody
<b>Isotype:</b>	IgG2a
<b>Purity:</b>	Antigen Affinity Purification
<b>Application:</b>	ELISA, WB, IP, IF
<b>Calculated MW:</b>	43kDa
<b>Observed MW:</b>	43kDa
<b>Reactivity:</b>	Human,Mouse,Rat,Zebra fish
<b>Immunogen:</b>	Recombinant Human Beta actin protein
<b>Buffer:</b>	PBS with 0.1% sodium azide and 50% glycerol, pH 7.2
<b>Storage:</b>	Store at -20°C. Do not aliquot
<b>Recommended Dilution:</b>	WB: 1:5000-10000 IP: 1:5000-10000 IF: 1:100-200



Western Blotting of cell/tissue lysates with anti-Beta Actin monoclonal antibody at dilution of 1:2000  
Lane 1: PANC cell lysates  
Lane 2: 293F cell lysates  
Lane 3: Human placenta lysates  
Lane 4: Mouse SP2/0 cell lysates  
Lane 5: Mouse kidney lysates  
Lane 6: Rat brain lysates

## Background:

Beta-actin (ACTB/ACTB) is one of six different actin isoforms in humans. Actins are highly conserved proteins that are involved in cell motility, structure and integrity. Beta actin is a major constituent of the contractile apparatus and one of the two nonmuscle cytoskeletal actins. Beta-actin gene is stably and constitutively expressed at high levels in most tissues and cells, and commonly used as a loading control for western blot and as a control for qPCR.



Immunohistochemical analysis of 293 cells, using 2060 antibody at 1:100 dilution

We focus on precise protein quantification