

MYC-Tag Mouse mAb

www.dia-an.cn

Cat#: 2097

027-59325199

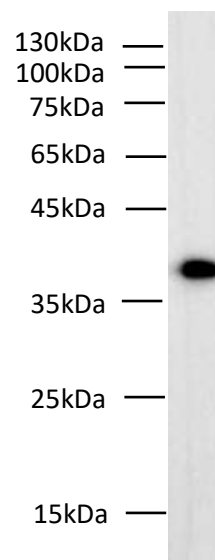
sevice@dia-an.com

Only For Research. Not For Diagnosis.

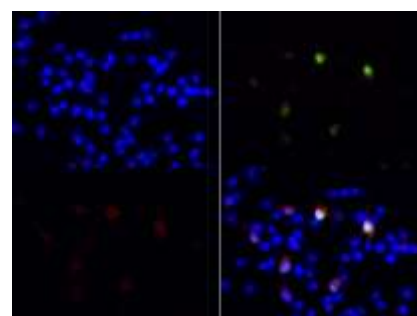
Synonyms:	EQKLISEEDL
Attribute:	Mouse monoclonal Antibody
Isotype:	IgG2a
Purity:	Antigen Affinity Purification
Application:	ELISA, WB, IP, IF
Calculated MW:	N/A
Observed MW:	N/A
Reactivity:	Protein fused with MYC tag
Immunogen:	Peptide EQKLISEEDL
Buffer:	PBS with 0.1% sodium azide and 50% glycerol, pH 7.2
Storage:	Store at -20°C. Do not aliquot
Recommended Dilution:	WB: 1:1000-1:10,000 IP: 5ug/sample IF: 1:100-1:500

Background:

The MYC tag, derived from the c-MYC protein, is a popular epitope tag for detecting the expression of recombinant proteins in yeast, bacteria, insect, and mammalian cell systems. It can be used for affinity chromatography, then used to separate recombinant, overexpressed protein from wild type protein expressed by the host organism. It can also be used in the isolation of protein complexes with multiple subunits.



Western Blotting of MYC-Tag fused recombinant protein with Anti-MYC mouse monoclonal antibody at dilution of 1:5000.



Immunofluorescent analysis of 293F cells transfected with mCherry, using 2097 at 1:500 dilution

We focus on precise protein quantification