

S-Tag mouse mAb

www.dia-an.cn

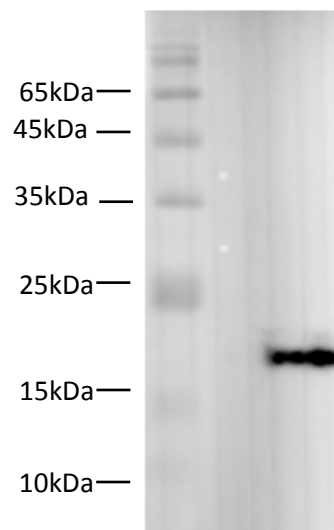
Cat#: 2133

027-59325199

sevice@dia-an.com

Only For Research. Not For Diagnosis.

Synonyms:	S Tag ; S-Tag ; KETAAAKFERQHMS
Attribute:	Mouse Monoclonal Antibody
Isotype:	IgG2a
Purity:	Antigen Affinity Purification
Application:	ELISA, WB, IP, ChIP
Observed MW:	MW of fusion protein
Immunogen:	Peptide KETAAAKFERQHMS
Buffer:	PBS with 0.1% sodium azide and 50% glycerol, pH 7.2
Storage:	Store at -20°C. Do not aliquot
Recommended Dilution:	WB: 1:5000-10000 IP: 3ug/sample IF: 1:100-200



Western blot of S tag fusion protein(40kDa) with anti-S tag antibody (Cat# : 2133) at dilution of 1:2000

Background:

S tag is an epitope tag composed of a 15 residue peptide, KETAAAKFERQHMS, derived from the pancreatic ribonuclease A. This interactive complex (S - tag/S - protein) results in micromolar affinity - dependent upon pH, temperature, and ionic strength . The S - tag itself enables colorimetric detection via western blot analysis or a rapidly detected assay dependent upon ribonucleolytic reconstitution and activity.

We focus on precise protein quantification