

SYCP3 Rabbit Polyclonal Antibody

www.dia-an.cn

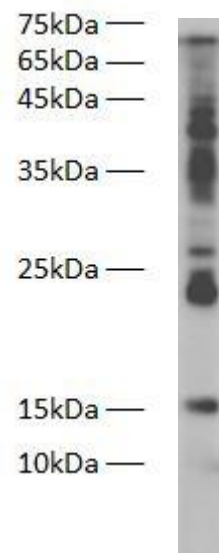
Cat#: 3006

027-59325199

sevice@dia-an.com

Only For Research. Not For Diagnosis.

Synonyms:	SYCP3
Attribute:	Rabbit Polyclonal Antibody
Isotype:	IgG
Purity:	Antigen Affinity Purification
Application:	ELISA, WB,
Calculated MW:	26kDa
Observed MW:	28kD
Reactivity:	Zebra fish
Immunogen:	Recombinant Human SYCP3 protein expressed by E.Coli
Buffer:	PBS with 0.1% sodium azide and 50% glycerol, pH 7.2
Storage:	Store at -20°C. Do not aliquot
Recommended Dilution:	WB: 1:1000-2000 IP: 1:5000-10000 IF: 1:100-200



Western blot of Zebra Fish whole lysates with anti-SYCP3 Rabbit Polyclonal Antibody at dilution of 1:1000

Background:

Synaptonemal complex protein 3 is a component of the synaptonemal complex formed between homologous chromosomes during the prophase of meiosis. Sycp3 encodes a component of the synaptonemal complex. A null mutation of Sycp3 in mice causes azoospermia with meiotic arrest. SYCP3 has an essential meiotic function in human spermatogenesis that is compromised by the mutant protein via dominant negative interference.

We focus on precise protein quantification