

Anti- GAPDH Rabbit pAb

www.dia-an.cn

Cat#: 3058

027-59325199

sevice@dia-an.com

Only For Research. Not For Diagnosis.

Synonyms:	GAPDH
Attribute:	Rabbit Polyclonal Antibody
Isotype:	IgG
Purity:	Antigen Affinity Purification
Application:	ELISA, WB, IP, IF
Calculated MW:	N/A
Observed MW:	N/A
Reactivity:	Human, Mouse, Rat, Zebra fish
Immunogen:	Recombinant Human GAPDH protein expressed by E.Coli
Buffer:	PBS with 0.1% sodium azide and 50% glycerol, pH 7.2
Storage:	Store at -20°C. Do not aliquot
Recommended Dilution:	WB: 1:2000-5000 IP: 1:5000-10000 3ug/Sample IF: 1:100-500

Background:

GAPDH is an enzyme of 37kDa that catalyzes the sixth step of glycolysis and thus serves to break down glucose for energy and carbon molecules. Because the GAPDH gene is often stably and constitutively expressed at high levels in most tissues and cells, it is commonly used as a loading control for western blot and as a control for qPCR.

65KD

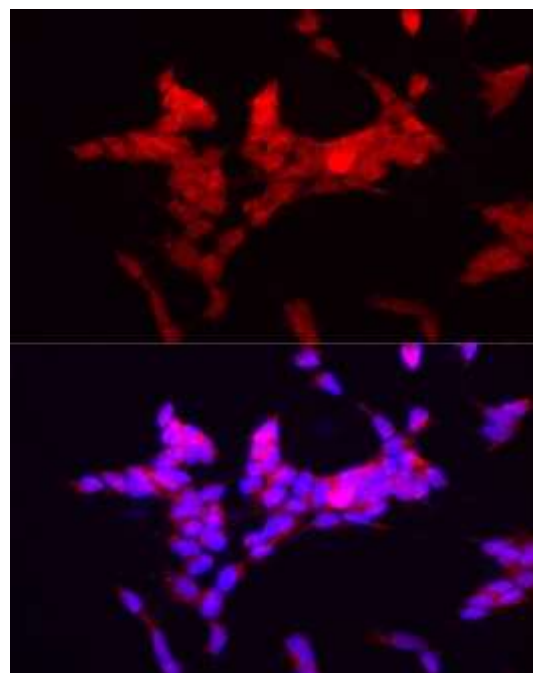
45KD

35KD

25KD



Western blot of Zebra fish whole lysates with anti-GAPDH at dilution of 1:2000



Immunofluorescent analysis of SHSY-5Y cells with 3058 at dilution of 1:100.

We focus on precise protein quantification

The logo for DIA-AN, featuring a red oval with the letters 'da' inside, followed by the text 'DIA-AN' in a bold, sans-serif font.