

Succinylated Lysine Rabbit Polyclonal Antibody

www.dia-an.cn

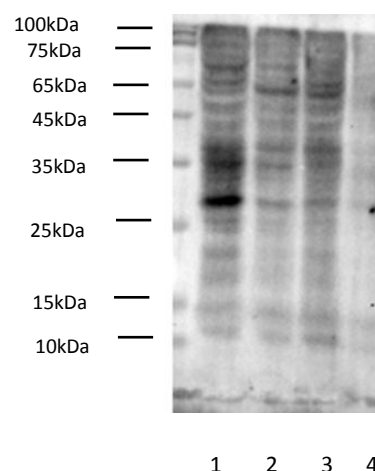
Cat#: 3089

027-59325199

sevice@dia-an.com

Only For Research. Not For Diagnosis.

Attribute:	Rabbit Polyclonal Antibody
Isotype:	IgG
Purity:	Antigen Affinity Purification
Application:	WB, IP, ELISA
Reactivity:	Succinylated Protein
Immunogen:	Succinylated BSA
Buffer:	PBS with 0.1% sodium azide and 50% glycerol, pH 7.2
Storage:	Store at -20°C. Do not aliquot
Recommended Dilution:	WB: 1:1000-2000 IP: 1:5000-10000



Western blot of whole lysates of lane 1 HEK-293 ; Lane 2 MCF7; Lane 3 HepG2; Lane 4 Hela cell lysates with Succinylated Lysine Rabbit Polyclonal Antibody at dilution of 1:1000 dilution.

Background:

Succinylation is a posttranslational modification where a succinyl group (-CO-CH₂-CH₂-CO₂H) is added to a lysine residue of a protein molecule. This modification is found in many proteins, including histones. The potential role of succinylation is under investigation, but as addition of succinyl group changes lysine's charge from +1 to -1 (at physiological pH) and introduces a relatively large structural moiety (100 Da), bigger than acetylation (42 Da) or methylation (14 Da), it is expected to lead to more significant changes in protein structure and function. By analogy to acetylation, it has been suggested that succinyl-CoA is the cofactor of enzyme-mediated lysine succinylation.

We focus on precise protein quantification