

AKT Rabbit Polyclonal Antibody

www.dia-an.cn

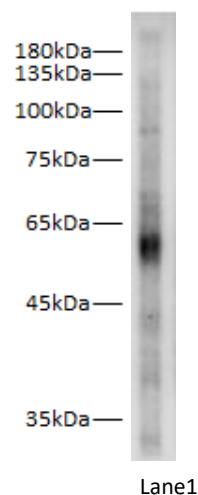
Cat#: 3392

027-59325199

sevice@dia-an.com

Only For Research. Not For Diagnosis.

Synonyms:	AKT; RAC-alpha serine/threonine-protein kinase-like isoform X1 ;
Attribute:	Rabbit Polyclonal Antibody
Isotype:	IgG1
Purity:	Antigen Affinity Purification
Application:	ELISA, WB
Calculated MW:	52kDa
Observed MW:	
Reactivity:	Zebra fish
Immunogen:	Recombinant <i>Oncorhynchus mykiss</i> AKT protein expressed by E.Coli
Buffer:	PBS with 0.1% sodium azide and 50% glycerol, pH 7.2
Storage:	Store at -20°C. Do not aliquot
Recommended Dilution:	WB: 1:1000-2000 IP: 1:50-100



Western blot of *Oncorhynchus mykiss* (lane 1) whole lysates with anti- AKT Rabbit Polyclonal Antibody at dilution of 1:1000

Background:

RAC-alpha serine/threonine-protein kinase-like isoform X1, also known as AKT, is a protein which in humans is encoded by the AKT gene. These proteins are phosphorylated by phosphoinositide 3-kinase (PI3K). AKT/PI3K forms a key component of many signalling pathways that involve the binding of membrane-bound ligands such as receptor tyrosine kinases, G-protein coupled receptors, and integrin-linked kinase.

We focus on precise protein quantification