

# Butyryl Lysine Rabbit Polyclonal Antibody

www.dia-an.cn

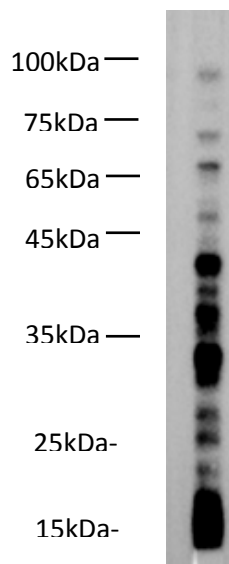
Cat#: 3095

027-59325199

sevice@dia-an.com

Only For Research. Not For Diagnosis.

<b>Attribute:</b>	Rabbit Polyclonal Antibody
<b>Isotype:</b>	IgG
<b>Purity:</b>	Antigen Affinity Purification
<b>Application:</b>	WB, IP, ELISA
<b>Reactivity:</b>	Butyryl Lysine Protein
<b>Immunogen:</b>	Butyryl Lysine BSA
<b>Buffer:</b>	PBS with 0.1% sodium azide and 50% glycerol, pH 7.2
<b>Storage:</b>	Store at -20°C. Do not aliquot
<b>Recommended Dilution:</b>	WB: 1:1000-2000 IP: 1:5000-10000



Western blot of anti-Butyryl Lysine Rabbit Polyclonal Antibody on Hela lysates at dilution of 1:1000

## Background:

Lysine propionylation and butyrylation are novel post-translational modifications in histones. Neutralization of the charge often has a profound impact on the substrate proteins. Accordingly all the known post-translational modifications at lysine have pivotal roles in cell physiology and pathology.