

Zebrafish LC3b Rabbit Polyclonal Antibody

www.dia-an.cn

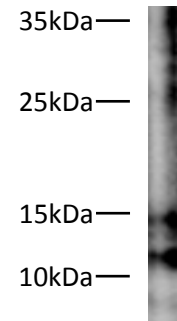
Cat#: 3127

027-59325199

sevice@dia-an.com

Only For Research. Not For Diagnosis.

Synonyms:	LC3b
Attribute:	Rabbit Polyclonal Antibody
Isotype:	IgG
Purity:	Antigen Affinity Purification
Application:	ELISA, WB
Calculated MW:	10/15kDa
Observed MW:	10/15kDa
Reactivity:	Zebra fish
Immunogen:	Peptide from zebrafish LC3b sequence
Buffer:	PBS with 0.1% sodium azide and 50% glycerol, pH 7.2
Storage:	Store at -20°C. Do not aliquot
Recommended Dilution:	WB: 1:1000-2000 IP: 3ug/Sample IF: 1:100-200



Western blot of zebrafish lysates with anti-LC3b Rabbit Polyclonal Antibody at dilution of 1:1000

Background:

LC3B is a subunit of the MAP1A and MAP1B microtubule-binding proteins and plays a central role in autophagosome membrane structure. This ubiquitin-like modifier is known to be involved in early stages of autophagosome formation and specifically with phagophore membrane elongation.

We focus on precise protein quantification