

## Ki67 Rabbit Polyclonal Antibody

www.dia-an.cn

Cat#:3140

027-59325199

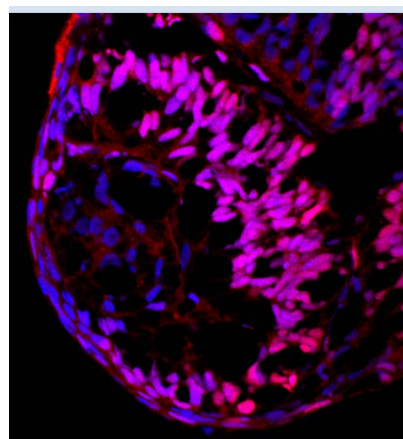
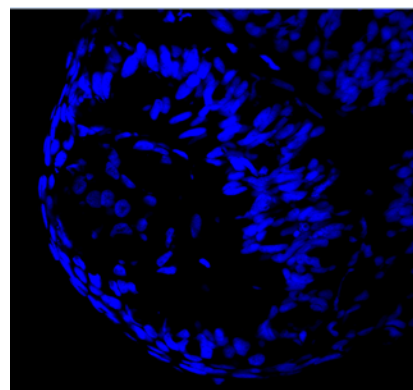
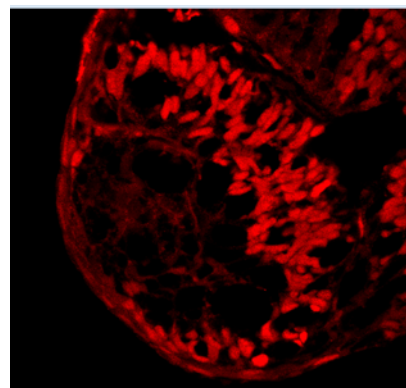
sevice@dia-an.com

**Only For Research. Not For Diagnosis.**

<b>Synonyms:</b>	antigen identified by monoclonal antibody Ki 67; marker of proliferation Ki-67; Ki-67
<b>Attribute:</b>	Rabbit Polyclonal Antibody
<b>Isotype:</b>	Polyclonal
<b>Purity:</b>	Antigen Affinity Purification
<b>Application:</b>	ELISA, WB, IP, IF
<b>Reactivity:</b>	Zebra fish
<b>Immunogen:</b>	Recombinant protein corresponding to Zebra fish Ki67
<b>Buffer:</b>	PBS with 0.1% sodium azide and 50% glycerol, pH 7.2
<b>Storage:</b>	Store at -20°C. Do not aliquot
<b>Recommended Dilution:</b>	IF: 1:100-200

### Background:

Ki67 is a nuclear protein that is expressed in proliferating cells. Ki67 is preferentially expressed during late G1, S, M, and G2 phases of the cell cycle, while cells in the G0 (quiescent) phase are negative for this protein. Increased proliferative activity is associated with more aggressive tumor and decreased disease-free survival period. This antibody, 3140, is specific to zebra fish Ki67.



Immunofluorescence of Zebra Fish eyeball with anti-Ki67 Rabbit Polyclonal Antibody at dilution of 1:100

We focus on precise protein quantification