

Zebrafish TLR3 Rabbit Polyclonal Antibody

www.dia-an.cn

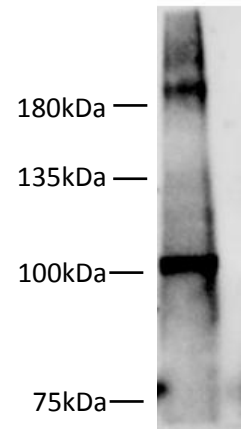
Cat#: 3146

027-59325199

sevice@dia-an.com

Only For Research. Not For Diagnosis.

Synonyms:	Toll-like receptor 3, CD283
Attribute:	Rabbit Polyclonal Antibody
Isotype:	IgG
Purity:	Antigen Affinity Purification
Application:	ELISA, WB
Calculated MW:	116kDa
Observed MW:	116kDa
Reactivity:	Zebra fish
Immunogen:	Peptide
Buffer:	PBS with 0.1% sodium azide and 50% glycerol, pH 7.2
Storage:	Store at -20°C. Do not aliquot
Recommended Dilution:	WB: 1:1000-2000 IP: 3ug/Sample IF: 1:100-200



Western blot of zebrafish lysates with anti-TLR3 Rabbit Polyclonal Antibody at dilution of 1:1000

Background:

TLR3 (Toll-like receptor 3, CD283) is a member of the Toll-like receptor (TLR) family which plays a fundamental role in pathogen recognition and activation of innate immunity. TLR3 is a nucleotide-sensing TLR which is activated by double-stranded RNA, a sign of viral infection. Acts via MYD88 and TRAF6, leading to NF-kappa-B activation, cytokine secretion and the inflammatory response.

We focus on precise protein quantification