

AVI-Tag Rabbit pAb

www.dia-an.cn

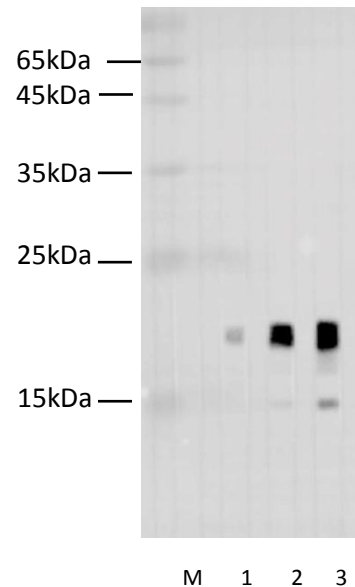
Cat#: 3160

027-59325199

sevice@dia-an.com

Only For Research. Not For Diagnosis.

Synonyms:	GLNDIFEAQKIEWHE
Attribute:	Rabbit Polyclonal Antibody
Isotype:	IgG
Purity:	Antigen Affinity Purification
Application:	ELISA, WB, IP
Calculated MW:	N/A
Observed MW:	N/A
Reactivity:	Human, Mouse, Rat, Zebra fish et al.
Immunogen:	Peptide GLNDIFEAQKIEWHE
Buffer:	PBS with 0.1% sodium azide and 50% glycerol, pH 7.2
Storage:	Store at -20°C. Do not aliquot
Recommended Dilution:	WB: 1:2000-5000 IP: 3ug/sample IF: 1:100-200



Western Blotting of AVI-Tag fused recombinant protein (18kDa) with Anti-AVI rabbit polyclonal antibody at dilution of lane 1: 1:10000; lane 2: 1:5000; lane 3 1:2000

Background:

Avi tag is a biotin-acceptor peptide, GLNDIFEAQKIEWHE. Biotinylation of the Avi-tag is enzymatically added by the *E. coli* biotin ligase BirA. This results in a single biotin molecule covalently attached to the lysine residue within the Avi-tag.

We focus on precise protein quantification