

## Streptavidin Rabbit pAb

www.dia-an.cn

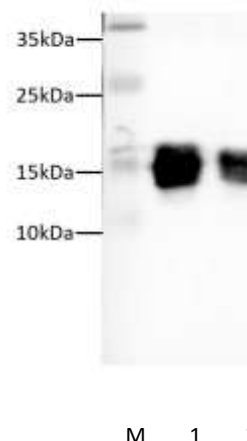
Cat#: 3238

027-59325199

sevice@dia-an.com

Only For Research. Not For Diagnosis.

<b>Synonyms:</b>	Avidin
<b>Attribute:</b>	Rabbit Polyclonal Antibody
<b>Isotype:</b>	IgG
<b>Purity:</b>	Antigen Affinity Purification
<b>Application:</b>	ELISA, WB, IP
<b>Calculated MW:</b>	N/A
<b>Observed MW:</b>	N/A
<b>Reactivity:</b>	Streptavidin
<b>Immunogen:</b>	Streptavidin
<b>Buffer:</b>	PBS with 0.1% sodium azide and 50% glycerol, pH7.2
<b>Storage:</b>	Store at -20°C. Do not aliquot
<b>Recommended Dilution:</b>	WB: 1:5000- • 10000 IP: 3ug/sample IF: 1:100-200



Western Blotting of 10ng Streptavidin (16kDa) with Streptavidin Rabbit polyclonal antibody at dilution of lane 1: 1:5000; lane 2: 1:10000

### Background:

Streptavidin is a biotin-binding protein found in the culture broth of the bacterium *Streptomyces*. Streptavidin can bind to four moles of biotin per mole of protein with extremely high affinity, approximately 10,000-15,000 Da. Streptavidin lacks the carbohydrate side chains present on avidin and has an isoelectric point of 6.5 to avidin's 10 far closer to that at which most useful biological interactions occur. As a result, Streptavidin frequently exhibits much lower non-specific binding than avidin does.

We focus on precise protein quantification